

Girl Scout Junior

Place your first Journey awards at the bottom of your vest. As you earn additional Journey awards, work your way up.

If your Journey awards and badges don't fit on the front of your vest or sash, you can wear them on the back.



Place your Journey awards above your badges.

American Flag Patch

Girl Scout Council Identification Set

Troop Crest

Troop Numerals

Membership Stars and Discs

Bridge to Girl Scout Junior Award

Junior Aide Award

Brownie Wings

My Promise, My Faith Pins

Safety Award Pin

World Thinking Day Award

Global Action Award

Girl Scout Junior Badges

Junior Insignia Tab

World Trefoil Pin

Girl Scout Bronze Award Pin

Girl Scout Membership Pin

Membership Numeral Guard

Journey Summit Award Pins

Journey Award Badges

Cookie Sale Activity Pin

Journey Award Badges

Journey Book	\$ 7.00
Girl's Guide	\$ 19.50
Badge Activity Set	\$ 4.00
Journey Award Badges	\$ 6.00
Badges	\$ 3.00
My Promise, My Faith	\$ 4.00
Safety Award	\$ 4.00
Summit Award	\$ 3.50

Vest	\$ 20.50
Sash	\$ 8.00
Polo	\$ 15.00
Scarf	\$ 12.00

Insignia Tab	\$ 3.00
USA Flag	\$ 2.25
Council ID Set	\$ 5.50
Troop Numbers	\$ 1.75
Troop Crest	\$ 2.00
Membership Pin	\$ 2.50
World Trefoil Pin	\$ 2.50
Numeral Guard	\$ 3.50
Star	\$ 1.50
Disc (24pk)	\$ 2.00
Disc (each)	\$ 0.09
Bridging Award Badge	\$ 2.50

Find everything she needs at your local Resource Center

The Girl's Guide to Girl Scouting

The *Girl's Guide to Girl Scouting* is her very own Girl Scout handbook. It includes instructions on how to earn awards such as badges as well as information about our Journeys series and bridging to the next level.



Journeys and Journey books

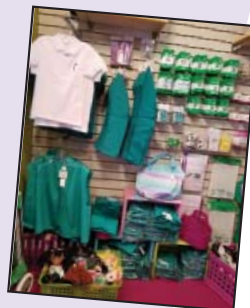


Girl Scouts can pick a Journey topic that they are interested in, like creating change or telling their own story, and use our materials to discover more. As she goes on her Journey, she'll earn awards to put on her uniform.

And more!

Drop in and find apparel, jewelry, hair accessories, plush animals, and more.

Note: Most badges and patches are iron-on but we recommend using an adhesive such as Badge Magic (found in our Resource Centers).



Thank you.
Your purchases help support leadership experiences for girls.

Resource Center Shop Locations and Hours

Marion Chester Read Service Center

131 S. 69th St., Milwaukee

Customer Care: 800-565-4475

Monday-Thursday 8:30 a.m.-6:30 p.m.

Friday 8:30 a.m.-5:00 p.m.

Saturday 8:30 a.m.-noon

New Berlin Service Center

21430 W. Greenfield Ave., New Berlin

Customer Care: 800-565-4475

Monday, Tuesday and Thursday 8:30 a.m.-5:30 p.m.

Wednesday 8:30 a.m.-6:30 p.m.

Friday 8:30 a.m.-5:00 p.m.

First Saturday of the month* 8:30 a.m.-noon

(*October through May)

Woodhaven Service Center

2303 37th St., Kenosha

Customer Care: 800-565-4475

Monday 9:00 a.m.-6:30 p.m.

Tuesday, Wednesday and Thursday 9:00 a.m.-5:30 p.m.

Friday 9:00 a.m.-5:00 p.m.

First Saturday of the month* 8:30 a.m.-noon

(*October through May)

Visit gswise.org for up to date Resource Center hours and closings.