



**Fox Springs-June Day Camp**  
**Fox Springs Service Area-Waukesha**  
**June 15<sup>th</sup>-19<sup>th</sup>, 2026**  
**9:00am-4:30pm**  
**Camp Silverbrook, West Bend**

Saddle up for **Wild West Adventures** at Day Camp! Get ready to explore the spirit of the frontier through games, challenges, and hands-on activities that bring the wide-open outdoors to life. From building teamwork on the trail to discovering hidden treasures and creating crafty keepsakes, every day will be filled with excitement, friendship, and discovery. Campers will step into a world of adventure where curiosity leads the way, imagination runs free, and every moment feels like a new frontier waiting to be explored. Pack your sense of adventure and join us for a summer of laughter, exploration, and unforgettable memories, your Wild West Adventure starts here!

<b>Fee</b>	<b>Members/Non-Members</b>
Nov. 15th-Dec. 20th: 2025 Pricing	\$195/\$285
Dec. 21st- March 1st: Early Bird Pricing	\$220/\$310
March 2nd- May 20th: Day Camp Pricing	\$245/\$335
May 20th- June 1st: Late Registration Pricing	\$270/\$360
PAs (grades 7-12) Register by March 1st	\$5 (Due at packet pick up)

No late registrations accepted.

**Evenings and overnights:**

Girls currently in grade 5: Wednesday night until 7:30 p.m., \$20

Girls currently in grade 6 (PAIT): Tuesday night until 7:30 p.m., \$20

Girls currently in grades 7-12: Monday and/or Tuesday until 7:30 p.m., \$20 a night **OR**

Girls currently in grades 7-12: Monday and/or Tuesday overnight, \$20 a night

**Mandatory All PA Training**

Date and Location: TBD

**Adult Volunteers**

The girls need you! One adult volunteer is needed for every 5-8 girls during each day of camp. That means each family should register at least one adult to help for a minimum one day during day camp. Volunteers don't have to be moms – dads, grandparents, family friends, young adult volunteers, Girl Scout alums, and more are welcome!

**Peewees (ages 3-5) and boys (6-12): \$15/day**

Peewees (boys and girls ages 3-5) and Boys (ages 6-12) are welcome on days the parent/guardian is volunteering (fee: \$15 per day), but they must be potty-trained (or close to it) and mature enough to participate in a full day of camp. 5 day adults will get one free day for their peewee or boy.

**Waitlist**

Due to Issues finding enough adult volunteers to cover our units, we will be Implementing a waitlist. All campers will be put onto a waitlist when registering. If your camper's troop/unit is covered with enough adult volunteers, they will be released from the waitlist and able to finish registering. Campers without a troop will be able to join troops with enough coverage if they do not have an adult who can volunteer.

**Transportation**

You are required to input your camper's transportation information in your camper's registration even if you are driving them every day. Please let us know how your camper is getting to camp in your camper's registration!!!!

**Bus Stops**

Busses will leave their respective stops at 7:50am SHARP!

Please arrive at the bus stop between 7:30am and 7:45am.

-Waukesha North High School

-Fox River Church- Off 164, Waukesha

Transportation will be provided for each late night to both bus stops.

**Early Pick Up/Late Drop Off**

Please wait at the entrance gate and call on the gate keypad. Your camper will be transported to you/picked up by the health supervisor.

**Lunch and Snack Food and Allergies**

Everyone, everyday, will need to bring a bagged lunch to camp, including PAs (this is a change from previous years, PAs staying overnight will be able to make a lunch after breakfast). Boys and 4<sup>th</sup> Graders will cook lunch one day at Outdoor Cook.

There will be an ice cream treat provided every day. There will be an allergen-free alternative available too.

We are a nut aware camp and food provided by camp will not contain nuts, however, campers do bring lunches from home and while we ask not to pack anything containing nuts, sometimes nuts make it into lunches from home. If you have concerns about your camper at camp with a nut or any allergy, please contact us.

## Online Registration Instructions

Adults must have a current background check for the safety of our campers. Please register at [gswise.org](https://www.gswise.org)

Register for camp online at <https://www.gswise.org/en/members/for-girl-scouts/camp-and-outdoors.html>

Pay with credit/debit card (Visa, American Express, MasterCard, Discover).

Adults volunteering for camp register online using the same process as the camper.

Adults register as campers grade 12+. After initial registration, go back into your CampMinder account and complete the required health history, transportation, volunteer days, overnights, and any other required information within one week. Failure to do so places your camper's registration in the incomplete status and creates additional follow-up by your volunteer directors. Please

contact [CustomerCare@gswise.org](mailto:CustomerCare@gswise.org) with questions or for assistance.

## Financial Assistance Info

If the cost of camp remains beyond your financial capacity, we invite you to apply for financial assistance. Please pay the required minimum deposit and check the financial assistance box in CampMinder. You will receive a form via email that you must complete to process your request. We treat all requests with the strictest of confidence.

## Cancellation Policy

Timeframe	Policy
<b>Up to 5 weeks prior</b> to camp session start date	Cancellations can be transferred to another camp/session or a refund for the amount paid minus the deposit will be issued. Allow two weeks for refund processing and receipt.
<b>3-5 weeks before</b> camp session start date	Cancellations can be transferred to another camp/session. A refund for the amount paid minus the deposit is only allowed in the following circumstances: <ul style="list-style-type: none"><li>• Medical reasons</li><li>• Mandatory summer school</li><li>• A death or critical illness (immediate family)</li><li>• Family moves out of the area</li></ul>
<b>Less than 3 weeks prior</b> to the camp session start date	No refund except for the following circumstances: <ul style="list-style-type: none"><li>• Medical reasons</li><li>• Mandatory summer school</li></ul>

	<ul style="list-style-type: none"> <li>• A death or critical illness (immediate family)</li> <li>• Family moves out of the area</li> </ul>
Camp session is <b>full or canceled by the council</b>	Full refunds will be issued, including camp deposit. Allow two weeks for refund processing and receipt.

## Health Information

Your camper's safety is our number one priority. We follow state licensing, American Camp Association Accreditation, and Girl Scout safety standards. Our standards include, but are not limited to:

- Certified lifeguards, health supervisors, behavioral health specialists, first aiders, and high-risk activity instructors
- Background checks for all adult staff and volunteers
- Training for all staff and volunteers to prioritize your camper's physical, mental, and emotional wellbeing
- Camps are licensed and inspected by state health inspectors
- Weather is monitored, and plans are in place for heat, storms, and other emergencies

## How do parents prepare medications for camp?

All medications, prescriptions, and non-prescriptions must be given to the health supervisor in the morning. All medications must come to camp in its pharmacy bottle with the camper's name, name of the medication, and current dosage clearly written on the bottle. Without this information, the medication will not be accepted. All medications should be indicated on the camper's registration on the medication administration form on CampMinder. Please make sure all non-prescription medication is in its original container. **Campers cannot keep medications in their belongings while at camp, except for epi pens and inhalers.**

## What if my camper becomes ill or injured at camp?

The health supervisor will administer first aid and follow the written procedures given by the camp physician. If a camper becomes so ill that a long rest period is required for recovery, or they cannot remain at camp, they may be sent home. If a camper's illness or injury is severe, they will be given emergency care at the scene and then the parents/guardians will be notified. In life-threatening situations, treatment may begin before notification. The following medications are stocked at camp and used (if approved on camper's health form) as an as-needed basis to manage illness and injury including: tylenol, neosporin, anti-itch cream, aloe, tums, ibuprofen, benadryl, eye drops, and epipen.

**How does Girl Scout insurance cover my camper?**

Girl Scout insurance provides supplementary coverage to campers' personal insurance and includes sickness and accident coverage for incidents that occur during their stay at camp.

**Arriving to camp healthy**

Please help us keep other campers, volunteers, and staff healthy this season by keeping your camper at home if they are not feeling well or are sick. If anyone is running a fever or has any consistent symptoms/signs of a contagious illness or disease, **campers may be sent home until they are symptom free and released for participation with a doctor's note from their provider.**

**Waterfront Info**

Swimming and boating are supervised by trained and certified lifeguards. Campers will be required to wear a personal flotation device when on watercrafts and will need to do a swim check before swimming if they want to go in deeper water.

**Day Camp Contact Information**

Contact us by email at: [Foxspringsdaycamp@gmail.com](mailto:Foxspringsdaycamp@gmail.com)

Please check out our camp website:  
[Foxspringsdaycamp.wixsite.com/daycamp](http://Foxspringsdaycamp.wixsite.com/daycamp)

Like Our Facebook Page:  
<https://www.facebook.com/FoxSpringsDayCamp>

Units, buses and schedules will be on our camp website on a password protected page when this information becomes available. Camp confirmation emails will go out 1-2 weeks before camp, but most information will be available on our website closer to camp. The earlier everyone registers, the earlier we can get info out.

## Volunteer Directors



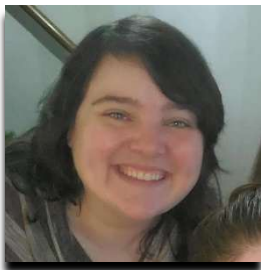
### **Becky "Snickers" Bauer, Camp Director Volunteer**

**Career:** I am a stay at home mom to my daughter "Snickerdoodle" and I own my own photography business and photograph weddings, families, events, seniors, and pets. You may have seen me walking around camp with a big camera.

**My camp start:** I started going to camp in 1988 when I was a Daisy, and I just never stopped going. Camper, PA, adult staff volunteer, and now, director.

**Fun fact:** When I was a camper, there were only 7-10 PAs. Now we have more than 60 and more than half of our volunteer staff are PA alums!

**Favorite part of camp:** The memories, the campers, watching everyone learn and have fun, and the volunteer staff. It's a week like none other.



### **Rande "Rizzo" Hagen, Camp Director Volunteer**

**Career:** I'm currently a Patient Access Service Representative for MCW Dept. of Plastic Surgery-Hand Center, but my heart will always wear a chef coat. I went to college for Culinary Management, and I'd like to think working at Outdoor Cook as a PA is where I got my start.

**My camp start:** I didn't join Girl Scouts until I was in 4th grade, so I've been coming to camp since 2001! Although technically I was a

Pee Wee for a year or two, does that count?

**Fun fact:** I'm related to Dr. Seuss!

**Favorite Part of Camp:** The freedom to be unapologetically myself, bring smiles to little faces (probably the big ones too) and the s'mores. Or maybe the pudgie pies.

## Council Contact Information

Genavieve "G Bug" Kopesky

Director of Day Camps by Community

[gkopesky@gswise.org](mailto:gkopesky@gswise.org)

(262) 364-4622

Customer Care

[customercare@gswise.org](mailto:customercare@gswise.org)

(800) 565-4475