

# Summer 2026 Program Guide

June-October  
2026



Look for the  symbol for events that are already open for registration!

Registration opens on May 5 at noon for all other events!

**girl scouts**   
of wisconsin  
southeast

# Badge in a Bag

Badge in a Bag is perfect for individual Girl Scouts and troops! Let us do all the work preparing you for the adventure—each kit comes fully stocked with a lesson plan and all required supplies needed to earn the award. To order your Badge in a Bag, complete the order form at [gswise.org/Discover/Activities/Badges and Awards/ Badge in a Bag Orders](http://gswise.org/Discover/Activities/Badges%20and%20Awards/Badge%20in%20a%20Bag%20Orders).



*Our full Badge in a Bag menu will return in fall.*

## Available Badge in a Bag options:

**Key:** D Daisy   B Brownie   J Junior   C Cadette   S Senior   A Ambassador

Badge in a Bag	Cost/Girl Scout	D	B	J	C	S	A
Trail Adventure badge	\$4						
Letterboxer badge	\$8						
Bugs badge	\$10						
Animal Habitats badge	\$8						
Camper badge	\$8						
Eco Camper badge	\$8						
Trailblazing badge	\$11						
Primitive Camper badge	\$10						
Night Owl badge	\$5						
Adventurer badge	\$10						
First Aid badge	\$12						
Adventure Camper badge	\$10						
Outdoor Art badge	\$10						
Survival Camping badge	\$10						
Water badge	\$6						

# Registration Information

Totally fun. Totally you.



You, your troop, and your Girl Scout sisters—dreaming up adventures, making the whole world sparkle with your own personal brand of magic, and creating forever friends and lifetime memories. Above all else, you're having a blast—because you know bringing the fun is all about being your true selves, trying new things, and cheering each other on. Get ready to have fun, learn cool new skills, and bring a bit more happy to your life.

- Events are a great way to start or complete requirements for an earned award.
- Events are facilitated by staff, volunteers, community partners, and/or Girl Scouts (under supervision).
- All GSWISE-sponsored events are fun, interactive, educational, held to the highest safety standards, and developed to meet the needs of all members.
- Some events require that chaperones register for the event and accompany Girl Scouts during the event. These events are indicated with the chaperone **CH** symbol.
- Some events are appropriate for the whole family, including siblings. Look for the family **F** symbol.

## Event Financial Assistance

Financial assistance is available to help members participate in Girl Scout events. Financial assistance can be considered for one event per season (fall/winter, winter/spring, summer) per Girl Scout when GSWISE hosts the event registration. Financial assistance may not be available for partner events.

To request event financial assistance, select the Financial Assistance box during online registration. A Financial Assistance Form will be emailed to the family to complete and submit. Financial assistance is funded by proceeds from the Girl Scout Cookie Program and gifts to Girl Scouting.

## Program Activity Credits (PACs)

Girl Scouts earn PACs by participating in the Girl Scout Fall Product and Cookie Programs. Credits can be used to pay for full or partial event fees when GSWISE hosts the event registration. To redeem PACs, select "Program Credits" as your payment method during online registration. A PAC Form will be emailed to the family to complete and submit.

## Registration Details

- Overnight event registration closes two weeks before the event.
- Day events close either one week or two days before the event.
- **NEW!** Events may be canceled 1–2 weeks in advance if registration is low. Don't wait—register early!
- Registration deadlines are listed in the event details for each event at [www.gswise.org/events](http://www.gswise.org/events).
- All events are subject to change. Refer to [www.gswise.org/events](http://www.gswise.org/events) ([www.gswise.org](http://www.gswise.org)>[MyGS](#)>[Find Events](#)) for details.

## When and How to Register

- The **✓** symbol indicates events that are already open for registration.
- Event registration opens on May 5 at noon for all other events.
- Go to [www.gswise.org/events](http://www.gswise.org/events) ([www.gswise.org](http://www.gswise.org)>[MyGS](#)>[Find Events](#)).
- Questions? Contact Customer Care at 800-565-4475 or [customercare@gswise.org](mailto:customercare@gswise.org).

## Enjoy a Sleepover at our Camp Properties!

Attending an event on a GSWISE property? Extend your experience with a troop overnight! Consider bringing your troop to spend the evening before or after your event to experience all that camp has to offer. Learn more about troop overnights at [www.gswise.org/troopcamping](http://www.gswise.org/troopcamping) ([www.gswise.org](http://www.gswise.org)>[Camps & Outdoors](#)>[Troop Camping](#)).

# Registration Information

## Girl Scout Individuals

Whether you're an Individually Registered Girl Scout (Juliette) without a troop or you're the only Girl Scout in your troop who is interested in an event, Girl Scout individuals are invited to service unit and council-wide events, workshops, service projects, and celebrations. These are fun chances to meet other Girl Scouts and grow your sisterhood.

## Confirmations and Recognitions

Event confirmation details are available at [www.gswise.org](http://www.gswise.org)>MYGS>My Events>Upcoming Events two weeks prior to the event. Share the event confirmation with everyone registered from your group.

Event descriptions indicate when Girl Scouts are working toward or earning an award at an event. Award patches are available for purchase at your local Girl Scout Resource Center, or contact us at 800-565-4475 or [customercare@gswise.org](mailto:customercare@gswise.org) to coordinate patch purchase with mailing/delivery options. It is noted in the event description when participation patches are included with the event registration.

## Program Aides (PA)

Girl Scouts in grades 6-12 can strengthen their leadership skills, channel their confidence, and work directly with younger Girl Scouts as a Program Aide! They can assist at events and lead activities to turn their goals into reality.

How PAs register:

- Go to [www.gswise.org](http://www.gswise.org)>MYGS>Find Events.
- Find events that interest you where you are at least two years older than the event participants.
- Find the event name with "PA" in front of it and use that link to complete your registration. PAs do not pay a registration fee.

PA Training is not needed to help at council events.



## Adult Volunteers/Chaperones

We can prioritize the safety of all Girl Scouts and Girl Scout volunteers only when adults become registered members and complete the required background check. Background checks are covered by the council.

- At all events, adults chaperoning Girl Scouts other than their daughter are required to be registered with Girl Scouts of the USA as an adult member and complete the required background check.
- At overnight events, all chaperones are required to be registered with Girl Scouts of the USA as an adult member and complete the required background check.

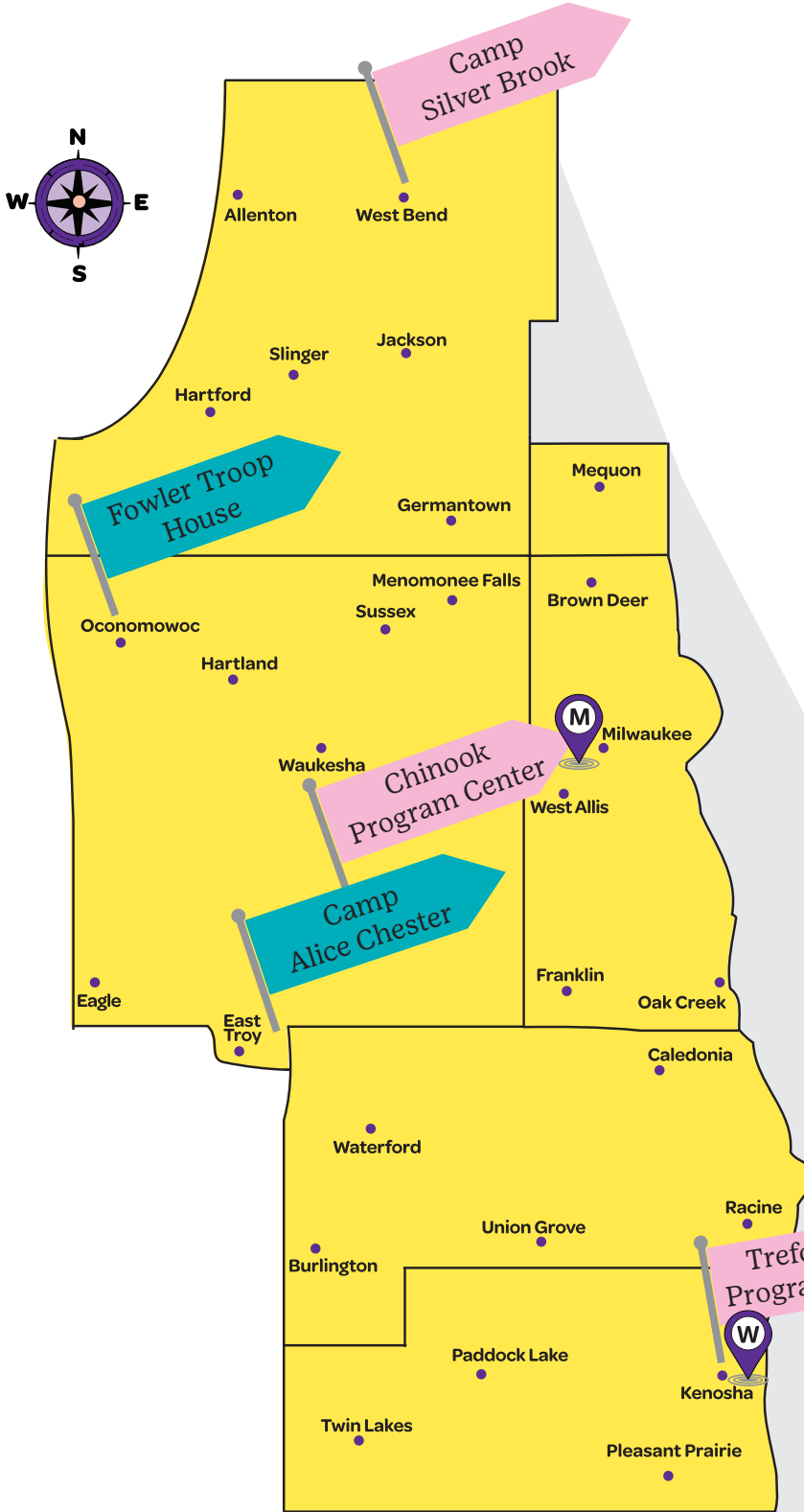
Adult volunteers are responsible for obtaining permission slips and for meeting adult-to-Girl Scout ratios for the event. All attending adults are expected to assist the Girl Scout(s) as needed and to prioritize appropriate Girl Scout behavior.

## Event Cancellations and Transfers

Cancellations are available when requested more than two weeks ahead of an event when GSWISE hosts the event registration. A \$5 cancellation processing fee will be incurred for each registrant for events with fees \$5 and higher. Refunds are not available when canceling within two weeks of the event. Cancellations might not be available for some partner events. Our registration system does not allow us to process event transfers in a single transaction. If you need to transfer from one event to a different event, please register and pay for the new event and then contact us at 800-565-4475 or [customercare@gswise.org](mailto:customercare@gswise.org) to process a cancellation for the original event; cancellation fees will still apply. If the event is canceled by the council, full refunds will be issued. Refunds should be received within two weeks from when the cancellation was processed.

# Camp and Council Properties

Operated by Girl Scouts of Wisconsin Southeast



## Program Centers



**Camp Alice Chester (CAC)**  
N8651 Townline Road, East Troy



**Camp Silver Brook (CSB)**  
2561 W. Decorah Road, West Bend



**Chinook Program Center (CPC)**  
S62W24528 Townline Road, Waukesha



**Fowler Troop House (FTH)**  
438 N. Oakwood Avenue, Oconomowoc



**Trefoil Oaks Program Center (TFOPC)**  
3901 First Street (County Road KR), Kenosha

## Service Centers



**Marion Chester Read Service Center (MCRSC)**  
131 S. 69<sup>th</sup> Street, Milwaukee



**Woodhaven Service Center (WHSC)**  
2303 37<sup>th</sup> Street, Kenosha





# Events and Trainings Calendar Quick Look

May	Event	Page #	D	B	J	C	S	A	Adult Training
23	Archery Instructor Training	11							X

June	Event	Page #	D	B	J	C	S	A	Adult Training
6	Archery Instructor Training	11							X
6	Girl Scout Day at Bear Paw Adventure Park	14	X	X	X	X	X	X	
11	Red Cross First Aid for Volunteers	10							X
13	Girl Scout Day with the Milwaukee Brewers	15	X	X	X	X	X	X	
14	Mt. Olympus Bus Trip	17	X	X	X	X	X	X	
21	Swim and Paddle (SUP)	19				X	X	X	
21	Swim and Paddle (Canoes or Funyaks)	19			X	X	X	X	
26	Girl Scout Day with the Kenosha Kingfish	15	X	X	X	X	X	X	
28	Girl Scouts Open Mat	16		X	X	X	X	X	

July	Event	Page #	D	B	J	C	S	A	Adult Training
10	Girl Scout Day with the Milwaukee Milkmen	15	X	X	X	X	X	X	
11	Girls in IP Day	16		X	X	X			
12	Swim and Paddle (SUP)	19				X	X	X	
12	Swim and Paddle (Canoes or Funyaks)	19			X	X	X	X	

# Events and Trainings Calendar Quick Look

August	Event	Page #	D	B	J	C	S	A	Adult Training
7	Girl Scout Day with the Lakeshore Chinooks	15	X	X	X	X	X	X	
11	Troop Camping 101	11							X
12	Geocache Training	11							X

September	Event	Page #	D	B	J	C	S	A	Adult Training
12	Discovering Your Future in Healthcare (Nursing Pathways)	14				X	X	X	
13	Camp Discovery Days	13	X	X	X	X	X	X	
14	Red Cross First Aid for Volunteers	10							X
15	Geocache Training	11							X
15	Red Cross First Aid & CPR/AED Training for Volunteers	10							X
16	ConstructHER Crane Design Challenge	13			X				
16	Troop Camping 101	11							X
19	Camp PA Training	13				X	X	X	
19	Low Ropes	17	X	X	X	X	X	X	
19	Rock Climbing	18	X	X	X	X	X	X	
19	Trailblaze & Trek	19					X	X	
20	Low Ropes	17	X	X	X	X	X	X	
20	Outdoor Club (Water Day)	18				X	X	X	
20	Rock Climbing	18	X	X	X	X	X	X	
26	Low Ropes	17	X	X	X	X	X	X	
26	Rock Climbing	18	X	X	X	X	X	X	
27	Fall Kick-Off at the Milwaukee County Zoo	14	X	X	X	X	X	X	





## Events and Trainings Calendar Quick Look

October	Event	Page #	D	B	J	C	S	A	Adult Training
3	Archery I	12		X	X	X			
3	Hatchet Throwing	17				X	X	X	
3	Low Ropes	17	X	X	X	X	X	X	
3	Rock Climbing	18	X	X	X	X	X	X	
4	Archery I	12		X	X	X			
8	Red Cross First Aid & CPR/AED Training for Volunteers	10							X
10	Camp Discovery Days	13	X	X	X	X	X	X	
11	Pumpkin Palooza	18	X	X	X	X	X	X	
12	Troop Camping 101	11							X
15	Geocache Training	11							X
17	Go Camping (Day option)	16		X	X				
17	Low Ropes	17	X	X	X	X	X	X	
17-18	Go Camping (Overnight option)	16		X	X				
17	Outdoor Skills-In-Person	11							X
17	Rock Climbing	18	X	X	X	X	X	X	
18	Archery I	12		X	X	X			
18	Creative Campfire Cooking	13			X	X			
18	Hatchet Throwing	17				X	X	X	
18	Outdoor Club (Apple Fun)	18				X	X	X	
20	Red Cross First Aid & CPR/AED Training for Volunteers	10							X

# Events and Trainings Calendar Quick Look

November	Event	Page #	D	B	J	C	S	A	Adult Training
1	Camp Discovery Days	13	X	X	X	X	X	X	
7	Camp PA Training	13				X	X	X	
7	Archery I	12		X	X	X			
7	3D Archery	12				X	X	X	
7	Hatchet Throwing	17				X	X	X	
8	Outdoor Club (Archery and a Hike)	18				X	X	X	
8	Camp Discovery Days	13	X	X	X	X	X	X	
12	Troop Camping 101	11							X



# Adult Volunteer Training



## Red Cross First Aid & CPR/AED Training for Volunteers ✓

This Red Cross course contains step-by-step, hands-on training so that you gain the ability to respond effectively in emergency and life-threatening situations until medical professionals arrive. For more information on first aid/CPR, check out Volunteer Essentials.

**Who should attend:** At least one registered adult who accompanies a troop on activities or overnight trips must be certified in first aid and CPR. Registration will open to Girl Scout Seniors and Ambassadors two weeks prior to training date if capacity allows.

Note:

- A four-hour online portion of this training is required prior to attending the scheduled in-person training. The link can be found in your confirmation document in your MyGS account.
- If you hold a current Red Cross certification and you need to renew, you may provide proof of your current Red Cross certification in lieu of the four-hour online training.
- You will be required to demonstrate at least one two-minute cycle of CPR performed on the floor to be certified. If you're unable to meet this requirement, you may attend the class but will not be certified and will not be able to count as the certified volunteer for your troop.

**\$45/person; registration closes one week before the training date**

Mon., June 15, 6:00-9:30 p.m., MCRSC

Mon., July 20, 6:00-9:30 p.m., MCRSC

Thu., Aug. 20, 9:30 a.m.-12:30 p.m., MCRSC

Tue., Sept. 15, 6:00-9:30 p.m., WHSC

Thu., Oct. 8, 6:00-9:30 p.m., CPC

## Red Cross First Aid for Volunteers ✓

This Red Cross course contains step-by-step, hands-on training so that you gain the ability to respond effectively in emergency and life-threatening situations until medical professionals arrive. For more information on first aid/CPR, check out Volunteer Essentials.

**Who should attend:** At least one registered adult who accompanies a troop on activities or overnight trips must be certified in first aid and CPR. Registration will open to Girl Scout Seniors and Ambassadors two weeks prior to training date if capacity allows.

Note:

- This course is specifically offered for volunteers who hold current certifications that cover CPR and choking. All participants will be required to show proof to the instructor that they currently hold one of these certifications on the day of their course:
  - American Heart Association *Heartsaver CPR AED* with optional *Child CPR AED* and *Infant CPR* modules. (The certificate must show that both optional modules were completed.)
  - American Heart Association *Basic Life Support (BLS)*
  - American Red Cross *Adult and Pediatric CPR/AED*
  - American Red Cross *Basic Life Support (BLS)*
- A two-hour online portion of this training is required prior to attending the scheduled in-person training. The link can be found in your confirmation document in your MyGS account.

**\$30/person; registration closes one week before the training date**

Thu., June 11, 6:30-8:30 p.m., MCRSC

Mon., Sept. 14, 6:30-8:30 p.m., WHSC

# Adult Volunteer Training



## Outdoor Skills Training

To build and cook over a campfire with your Girl Scouts, at least one adult from a troop must have completed either in-person Outdoor Skills Training or online Fire Safety and Outdoor Cooking Training. If you have extensive knowledge of Girl Scout procedures for building and cooking over a campfire, you can complete an exemption quiz in gsLearn instead.

### Outdoor Skills In-Person Training ✓

Learn the minimum basic outdoor skills to take your troop camping or volunteer at day camp. As you go through the session, you will follow the same techniques you'll use to teach your Girl Scouts how to do a flag ceremony, use knives safely, build a campfire, cook their own meals, and clean their dishes properly. You'll enjoy a tasty lunch you help prepare!

**\$10/person (covers food costs)**

Sat., Oct. 17, 9:00 a.m.-1:00 p.m., CSB

### Archery Instructor Training

**Ages 15 and older**

Do you want to lead archery for your troop or at council events? You can get certified as an instructor! PAs/CITS can be certified but must teach with an adult instructor. To take training, you must already know how to use a bow and arrow safely.

#### How to Sign Up:

**Step 1: Register.** Sign up for the in-person class you want to attend. We will then send you directions for the online part.

**Step 2: Online Training.** You must finish the USA Archery online training at least one week before your in-person class. If you do not finish it, you cannot come to the in-person training.

**In-Person Training Free; USA Archery online training \$45/person**

Sat., May 23, 9:00 a.m.-1:00 p.m., CPC

Sat., June 6, 9:00 a.m.-1:00 p.m. CAC

### Fire Safety and Outdoor Skills Online

Watch a series of videos to learn how to teach your Girl Scouts fire building, outdoor cooking, and proper dish washing procedures. Then take a quiz to pass the course, allowing you to build and cook over a fire with your Girl Scouts or volunteer at day camp. Head to gsLearn and search for 497 Fire Safety and Outdoor Cooking to get started.

### Geocache Training ✓

Discover what geocaching is all about and how your Girl Scouts (and you) can take part in this lifelong adventure. Learn how to use the GPS units in our Go Geo Take Out Boxes as you both find and hide caches, so you can complete the Girl Scout Junior Geocaching badge or just have fun with your troop.

**Free; pre-registration required**

Wed., Aug. 12, 6:30- 7:30 p.m., MCRSC

Tue., Sept. 15, 6:00-7:00 p.m., CPC

Thu., Oct. 15, 6:30-7:30 p.m., CSB

### Troop Camping 101 ✓ *New!*

Join us for an informational session on taking your troop camping. Learn a little more about our properties and some simple planning tips for a successful overnight.

**Free; pre-registration required**

Tue., Aug. 11, 7:00-8:00 p.m., Virtual

Wed., Sept. 16, 7:00-8:00 p.m., Virtual

Mon., Oct. 12, 7:00-8:00 p.m., Virtual

Thu., Nov. 12, 7:00-8:00 p.m., Virtual

# Girl Scout Events



## Event Location Key:

To view the full list of properties operated by GSWISE, go to [www.gswise.org/locations](http://www.gswise.org/locations).

CAC = Camp Alice Chester, East Troy

CPC = Chinook Program Center, Waukesha

CSB = Camp Silver Brook, West Bend

MCRSC = Marion Chester Read Service Center, Milwaukee

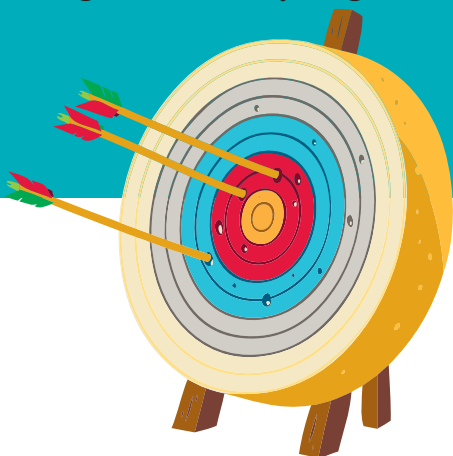
TFOPC = Trefoil Oaks Program Center, Kenosha

WHSC = Woodhaven Service Center, Kenosha

## Icon Key:

- |                                    |  |
|------------------------------------|--|
| <b>D</b> Daisy (Grades K-1)        | <b>F</b> Family  |
| <b>B</b> Brownie (Grades 2-3)      | <b>CH</b> Chaperone  |
| <b>J</b> Junior (Grades 4-5)       | <b>PA</b> Program Aide   |
| <b>C</b> Cadette (Grades 6-8)      | <input checked="" type="checkbox"/> Event Registration is Open |
| <b>S</b> Senior (Grades 9-10)      |  |
| <b>A</b> Ambassador (Grades 11-12) |  |

Girl Scouts in grades 6-12 are welcome to attend events with the **PA** symbol as Program Aides (PA), where they can strengthen their leadership skills leading activities for younger Girl Scouts. PA registration is free; PA Training is not needed.



## 3D Archery

**C S A CH**

Practice your archery skills in the woods! You will shoot at targets hidden among the trees with a small group. You might have to aim high or low to hit the bullseye. It is a great way to become an even better shooter!

**\$14/Girl Scout**

Sun., Oct. 4, 12:30-1:45 p.m., CPC

Sun., Oct. 4, 2:00-3:15 p.m., CPC

Sat., Nov. 7, 11:30 a.m.-12:45 p.m., CPC

Sat., Nov. 7, 1:15-2:30 p.m., CPC

**Earned award:** Cadette Archery badge

## Archery I

**B J C CH**

Take aim as you give archery a shot. Learn new skills and practice using a bow and arrow.

**\$14/Girl Scout**

Sat., Oct 3, 10:00-11:15 a.m., CAC

Sat., Oct. 3, 11:30 a.m.-12:45 p.m., CAC

Sat., Oct. 3, 1:15-2:30 p.m., CAC

Sun., Oct. 4, 3:30-4:45 p.m., CPC

Sun., Oct. 18, 12:30-1:45 p.m., CSB

Sun., Oct. 18, 2:00-3:15 p.m., CSB

Sat., Nov. 7, 10:00-11:15 a.m., CPC

Date/Time TBD, TFOPC (check the website calendar this summer)

**Earned award:** Cadette Archery badge

# Girl Scout Events



Events: listed in alphabetical order  
See page 12 for an icon and location key



## Camp Discovery Days

**New!**



Come see our beautiful camps! You can walk around to see what makes each one special. You can also look at the buildings and cabins or go for a hike on the trails. There are no planned activities or games, so you can explore on your own. Get your questions answered about troop overnights and summer camp.

**Free; pre-registration required**

Sun., Sept. 13, 1:00-3:00 p.m., CAC

Sat., Oct. 10, 1:00-3:00 p.m., CPC

Sun., Nov. 1, 1:00-3:00 p.m., CSB

Sun., Nov. 8, 1:00-3:00 p.m., TFOPC

## Camp PA Training



Teen Girl Scouts are a big part of summer camp. This training will help you get ready for camp by teaching you how to be a great leader and work with younger campers. This training will help you get ready for camp. You will also learn how to stay happy and strong all summer long!

**\$10/Girl Scout**

Sat., Sept. 19, 9:00 a.m.-12:00 p.m., CPC

Sat., Nov. 7, 9:00 a.m.-12:00 p.m., CPC

**Related award:** Program Aide award

## ConstructHER Crane Design Challenge



Calling all future engineers! Join the Walsh Group - Construction Management Services onsite at the future home of Microsoft's Mt. Pleasant Data Center. Learn how simple and compound machines, like cranes, work! Meet a local female crane business owner, safely see cranes and a construction site in action, and dive into the design process to create, build, test, and improve your crane design. This event is sponsored by the Walsh Group.

**\$5/Girl Scout**

Wed., Sept. 16, 5:30-7:30 p.m., Microsoft Mt. Pleasant Data Center

**Earned award:** Crane Design Challenge badge

## Creative Campfire Cooking



Cooking outside is a great way to enjoy nature and learn new things! You will learn a new way to cook a hardboiled egg over the fire, how to make a box oven and cook pizza in it, and how to make a sweet treat in a Dutch oven. What a fun way to eat with friends while enjoying the beautiful outdoors!

**\$14/Girl Scout**

Sun., Oct. 18, 12:30-3:30 p.m., CSB

**Related awards:** Junior Simple Meals or Cadette New Cuisines badges

# Girl Scout Events



Events: listed in alphabetical order  
See page 12 for an icon and location key

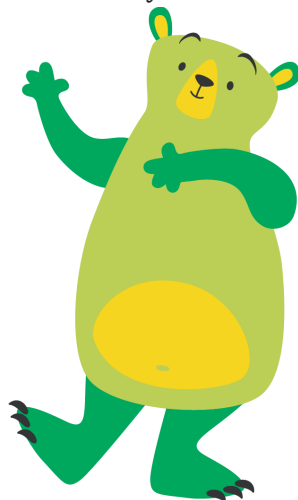
## Discovering Your Future in Healthcare (Nursing Pathways)



Dreaming about a future in healthcare? Join us for an exciting experience with Marquette University's College of Nursing team. Get hands-on clinical experience designed to simulate real-life healthcare scenarios, a behind-the-scenes campus tour, and the chance to connect with current nursing undergraduate students and faculty. Discover career pathways, practice essential nursing skills, and get a taste of college life, all while enjoying fun activities and pizza! Tailored presentations will be offered - one for middle school students and another for high school students. Cadettes will explore healthcare careers, inspiring women in science, and nursing history through interactive activities, while building a strong STEM foundation for the future. Seniors/Ambassadors will explore nursing careers, specialties, and advanced practice roles, while gaining insight into college readiness, workforce trends, and the growth mindset for lifelong success. Whether you're curious about nursing or passionate about helping others, this is your chance to explore the possibilities.

**Free; pre-registration required**

Sat., Sept. 12, 9:00 a.m.-2:00 p.m.,  
Marquette University, Milwaukee



## Fall Kick-Off at the Milwaukee County Zoo



Join us for a fun-filled, fall kick-off event at the Milwaukee County Zoo to celebrate the new Girl Scout year! Have fun with interactive activities in the Zoo Terrace, enjoy a dance party, explore the zoo animals, and more! When you renew your Girl Scout membership early for Membership Year 2027 (October 1, 2026 - September 30, 2027), you will receive access to purchase discounted tickets to this event. Watch your email, Rallyhood, and social media for more information coming soon!

**\$13/ages 13 and older; \$11/ages 3-12; ages 2 and under free**  
Sun., Sept. 27, 10:00 a.m.-2:30 p.m., Milwaukee County Zoo

## Girl Scout Day at Bear Paw Adventure Park New! ✓



Enjoy a fun-filled day at Bear Paw Adventure Park. Pick and choose your adventure - from swimming at Bear Paw Beach, to going on Adventure Island, or to testing your skills on the ropes course. Enjoy a craft at the Girl Scout Mobile from 10:00 a.m.-12:00 p.m. and a photo bingo game. Bring your troop, families, and Girl Scout sisters to this fun day in the sun!

**Ticket fees vary - add-on activities available**

Sat., June 6, Bear Paw Adventure Park, Caledonia

# Girl Scout Events

D B J C S A

Events: listed in alphabetical order  
See page 12 for an icon and location key

## Girl Scout Day with the Kenosha Kingfish ✓

D B J C S A F CH

Cheer on the Kenosha Kingfish as they take on the Battle Creek Battle Jacks. Ticket includes a hot dog, soda, chips, and patch.

\$18/ticket

Fri., June 26, 6:35 p.m. (first pitch), Simmons Field, Kenosha

## Girl Scout Day with the Lakeshore Chinooks New!

D B J C S A F CH

Cheer on the Lakeshore Chinooks as they take on the Rockford Rivets. Enjoy post-game fireworks (weather permitting).

\$14/ticket

Fri., Aug. 7, 6:35 p.m. (first pitch), Moonlight Graham Field, Mequon

We love Juliettes and individual Girl Scouts at events! See pg. 4 for more details.



## Girl Scout Day with the Milwaukee Brewers ✓

D B J C S A F CH

Cheer on the Brewers with your troop, family, and friends and enjoy special ticket savings. Girl Scout troops and families can participate in a pregame parade, and Girl Scouts will receive a patch.

Ticket fees vary

Sat., June 13, 6:15 p.m. (first pitch), American Family Field, Milwaukee

## Girl Scout Day with the Milwaukee Milkmen ✓

D B J C S A F CH

Cheer on the Milwaukee Milkmen as they take on the Lake Country DockHounds. Tickets include a group gift.

Ticket fees vary

Fri., July 10, 6:30 p.m. (first pitch), Franklin Field, Franklin

## Girl Scout Family Movie Night at Davidson Park

D B J C S A F CH

Join GSWISE for a fun, FREE family-friendly movie night (movie TBD). The night starts with activities around the park, including food trucks, a popcorn vendor, dirty soda vendor, and ice cream. Wear your Girl Scout gear to show your pride!

Free; no pre-registration required

Fri., July 17, 6:00 p.m. (activities begin), 6:30 p.m. (movie begins), Davidson Park, Milwaukee

# Girl Scout Events



Events: listed in alphabetical order  
See page 12 for an icon and location key

## Girl Scout Leadership Network

Join the Girl Scout Leadership Network for the 2026-2027 school year! This is an amazing opportunity for Girl Scouts in grades 9-12 to advise our CEO, provide perspective on issues facing Girl Scouts today, and participate in enriching topics of interest with professional guest speakers—all while developing your leadership skills. GSLN meetings are typically on Sundays from 1:00-3:00 p.m.; 2026-2027 meeting dates include Oct. 25, Nov. 22, Feb. 21, March 14, April 11, May TBD.

Register now at <https://gswise.jotform.com/250944060217855>



## Girl Scouts Open Mat

Grades 3-12,

Curious about wrestling? Come give it a try! Learn the basics of wrestling, build strength, and have fun trying something new in a supportive space. Hosted by 2x College All-American Mateah Roehl.

**Free; pre-registration required**

Sun., June 28, 1:00-2:00 p.m., Askren Wrestling Academy, Hartland

## Girl Scouts Love State Parks

Celebrate Girl Scouts Love State Parks by visiting state parks, forests, and natural areas in September and October! You can explore the parks with your family or join a special event. Keep an eye on your email, Rallyhood, and social media for more news coming soon!



## Girls in IP Day

Discover how patents, trademarks, and copyrights protect new ideas and inventions. Explore real patents created by young female entrepreneurs. Then, design and build your own version of one of the products. Finish by creating a unique trademark and advertisement to showcase your invention.

**Free; pre-registration is required**

Sat., July 11, 1:00-3:00 p.m., Amundsen Davis, Milwaukee

**Earned awards:** Brownie Budding Entrepreneur, Junior Business Jumpstart, Cadette Business Creator badges

## Go Camping (Overnight and Day Options)

Grades 2-4,

Become a pro camper at your first sleepover! Staff and volunteers will be there to help. You can also come for just the day to learn new skills. You will learn how to lead a flag ceremony and make friendship bracelets using special knots. We will also show you how to build a fire and cook over it. If you stay the night, you can follow glowing signs on a night hike! Groups staying overnight will all stay in a building and will need to bring their own food. We will send you meal ideas once you sign up. Adults who come will also get credit for taking Fire Safety and Outdoor Cooking Training, so you can go camping with your troop on your own in the future.

**Overnight Option:**

\$24/Girl Scout; \$10/adult

Sat., Oct. 17, 12:45 p.m.-Sun., Oct. 18, 9:00 a.m., CSB

**Day Option:**

\$14/Girl Scout; adults are free but pre-registration is required

Sat., Oct. 17, 1:15-4:30 p.m., CSB

**Earned awards:** Brownie Cabin Camper or Junior Camper badges (overnighters only)

**Related award:** Outdoor Adventurer badge

# Girl Scout Events



Events: listed in alphabetical order  
See page 12 for an icon and location key



## Hatchet Throwing



Learn how to throw a hatchet! Find out how to aim and get a high score. Practice your skills and challenge your friends to see who can hit the target best!

**\$14/Girl Scout**

Sat., Oct. 3, 2:45-4:00 p.m., CAC

Sun., Oct. 18, 3:30-4:45 p.m., CSB

Sat., Nov. 7, 2:45-4:00 p.m., CAC

Date/Time TBD, TFOPC (check the website calendar this summer)

## Low Ropes



Have a special team-building day with just your troop! You will visit our low ropes course to learn how to work together. Your troop will practice listening to each other, solving problems, and helping one another to finish the course. To sign up, only one adult needs to register. After that, you will get an online form to list everyone in your troop and pay for the event.

**\$16/Girl Scout**

Sat., Sept. 19, 12:00-2:00 p.m., CAC

Sat., Sept. 19, 2:15-4:15 p.m., CAC

Sun., Sept. 20, 12:30-2:30 p.m., CAC

Sat., Sept. 26, 9:00-11:00 a.m., CAC

Sat., Sept. 26, 11:15 a.m.-1:15 p.m., CAC

Sat., Oct. 3, 12:00-2:00 p.m., CAC

Sat., Oct. 3, 2:15-4:15 p.m., CAC

Sat., Oct. 17, 9:00-11:00 a.m., CAC

Sat., Oct. 17, 11:15 a.m.-1:15 p.m., CAC

## Media Girls



Media Girls are the official faces and voices of GSWISE! Receive special, hands-on training from GSWISE and local experts on all forms of communications and media and share stories with the Girl Scout community and the world! You'll learn so many new skills, including how to use your voice to Take Action – and you'll get to show off your skills throughout the year. Applications will open in September 2026 and close in October 2026. Watch social media and Rallyhood for more details!

## Mt. Olympus Bus Trip



Get ready for an epic day of thrills, slides, and fun at Mt. Olympus Water & Theme Park in the Wisconsin Dells! This event is for troops and families! Optional bus transportation will be provided at an additional cost. Centrally located bus stops will be determined based on interest. Water park hours are 10:00 a.m.-7:00 p.m., and theme park hours are 10:00 a.m.-9:00 p.m. Troops/families will check in at the Group Sales check-in and purchase tickets upon arrival. Admission includes a hotdog, chips, and beverage for lunch.

**Admission \$15.99/person, pre-registration required; Optional busing \$22/person or parking \$40/car (transportation choice must be designated at time of registration)**

Sun., June 14, 10:00 a.m.-6:00 p.m. (does not include travel time)

# Girl Scout Events



**Events: listed in alphabetical order**  
*See page 12 for an icon and location key*

## Outdoor Club *New!*



Join the camp team for some fun outdoor and camp activities. Attend the dates and activities that work for you. These events are only for Girl Scouts - no chaperones needed. Fees vary by date. Additional dates for remainder of the year will be shared in the September-May program guide.

**Water Day - \$10/Girl Scout:** Spend time swimming and/or boating at Camp Alice Chester.

Sun., Sept. 20, 1:00-3:00 p.m., CAC

**Apple Fun - \$15/Girl Scout:** Join us for apple picking and corn maze fun at the Elegant Farmer.

Sun., Oct. 18, 1:00-3:00 p.m., CAC

**Archery and a Hike - \$5/Girl Scout:** Practice hitting the target and hiking through camp as you see how we use trail cameras.

Sun., Nov. 8, 1:00-3:00 p.m., CAC

## Pumpkin Palooza *New!*



Join us as we celebrate fall with tons of pumpkin fun! Try your hand at pumpkin archery or slingshots, make a pumpkin craft, play some pumpkin games, go on a pumpkin scavenger hunt, and enjoy tasty pumpkin or regular s'mores.

**\$11/child five and older; \$5/adult; children under five do not need to register**

Sun., Oct. 11, 1:00-4:00 p.m., CAC



## Rock Climbing



Reach new heights on the rock wall at Camp Alice Chester! First, you will learn how to stay safe using climbing gear. Then, you can climb as much as you want!

**\$16/Girl Scout**

Sat., Sept. 19, 9:00-11:00 a.m., CAC

Sun., Sept. 20, 2:45-4:45 p.m., CAC

Sat., Sept. 26, 2:00-4:00 p.m., CAC

Sat., Oct. 3, 9:00-11:00 a.m., CAC

Sat., Oct. 17, 2:00-4:00 p.m., CAC

**Related awards:** Daisy, Brownie, and Cadette Snow or Climbing Adventure badges

# Girl Scout Events



Events: listed in alphabetical order  
See page 12 for an icon and location key

## Swim and Paddle



Spend two hours at camp swimming and paddling! Lifeguards will be at the waterfront to help troops enjoy half their time swimming and half their time canoeing or funyaking (Juniors-Ambassadors) or stand up paddleboarding “SUP” (Cadettes-Ambassadors).

\$14/Girl Scout

Canoes or Funyaks (J, C, S, A)

Sun., June 21, 12:30-2:30 p.m., CAC

Sun., July 12, 12:30-2:30 p.m., CAC

SUP (C, S, A)

Sun., June 21, 2:45-4:45 p.m., CAC

Sun., July 12, 2:45-4:45 p.m., CAC

**Related awards:** Junior Camper, Senior Paddling, Ambassador Ultimate Recreation Challenge badges



We love Juliettes and individual Girl Scouts at events! See pg. 4 for more details.



## Trailblaze & Trek



Do you love sleeping under the stars? Have you ever hiked to a campsite in the woods? Join us at Camp Alice Chester for a fun overnight. You will learn how to tent camp, pack a backpack, and pick the right tools for the woods. Take a short hike to our own Oak Knoll campsite. Spend the night there, cook meals over a fire, and have a great time! This trip is for everyone – even if it is your first camping trip. It will be a weekend full of exploring, making new friends, and learning new things.

\$25/Girl Scout

Sat., Sept. 19, 2:00 p.m.- Sun. Sept. 20, 11:00 a.m., CAC

# Highest Awards



## Girl Scout Bronze, Silver, and Gold Awards

J C S A

The Girl Scout Bronze, Silver, and Gold Awards prove you've got what it takes to build a better today—and tomorrow. You shine brightest when you're making the world a better place. That's why you can earn three separate awards—the Girl Scout Bronze, Silver, and Gold Awards—as you dream of a better tomorrow and take action in big ways today. Whether you want to focus on health and wellness, animals, STEM, public safety, education, the environment, or any other issue, you'll inspire others and learn more about yourself. As you earn one of Girl Scouting's highest awards, you'll change your corner of the world—and maybe even beyond.

### Highest Awards Video Trainings

Video trainings are available for Girl Scouts, parents/caregivers, and volunteers who want to learn what it takes to earn each of the Highest Awards.

Watch the videos at a time that works best for you.

- Bronze Award Video Training and other resources can be found at [www.gswise.org/bronzeaward](http://www.gswise.org/bronzeaward) ([www.gswise.org/Members>Highest Awards>Bronze Award](http://www.gswise.org/Members>Highest Awards>Bronze Award)).
- Silver Award Video Training and other resources can be found at [www.gswise.org/silveraward](http://www.gswise.org/silveraward) ([www.gswise.org/Members>Highest Awards>Silver Award](http://www.gswise.org/Members>Highest Awards>Silver Award)).
- Gold Award Video Training and other resources can be found at [www.gswise.org/goldaward](http://www.gswise.org/goldaward) ([www.gswise.org/Members>Highest Awards>Gold Award](http://www.gswise.org/Members>Highest Awards>Gold Award)).  
(note: training is required at the Gold level).

Complete the Silver/Gold Award Training Request Form to schedule a special in-person training session on a day/time that works best for your troop/group.



<https://gswise.jotform.com/232546316570051>

## Girl Scout Gold Award Approval Process

S A

Girl Scouts going for Gold must receive council approval at two occasions: first, prior to starting the project and second, after project completion.

- To obtain first project approval, Girl Scouts must submit their proposal in GoGold at least three weeks prior to the tentative start date of the project.
- To obtain second project approval, Girl Scouts must submit their final report in GoGold after project completion (final deadline is September 30 after they graduate high school).

Upon submission of the proposal or final report, the council will connect the Girl Scout with a representative from the Highest Awards Mentor Committee. Girl Scouts will correspond with the committee member to gain council approval through email, text messages, phone calls, video calls, and/or in-person meetings. If you wish to connect with the Highest Awards Mentor Committee prior to submitting a project proposal, simply contact Customer Care at 800-565-4475 or [customercare@gswise.org](mailto:customercare@gswise.org) to be connected earlier in the process.

**Related award:** Girl Scout Gold Award

## Girl Scout Highest Awards Celebration

J C S A F CH

This optional celebration is for Girl Scouts who have earned the Girl Scout Bronze, Silver, and Gold Awards and their guests. Final reports are due March 1, 2027 to be recognized at the 2027 Girl Scout Highest Awards Celebration. Submit final report online at [www.gswise.org/highestawards](http://www.gswise.org/highestawards) (go to Bronze, Silver, or Gold Award webpage for the report). Invitations will be sent in the spring to eligible Girl Scout awardees. Top 10 Cookie Sellers will also be recognized during the celebration.

Spring 2027 Date/Time/Location TBD

# Community Event Providers

## Who are Community Event Providers?

Community Event Providers are local organizations and businesses offering experiences that connect Girl Scouts with their community and the world around them. Activities are aligned with the Girl Scout Leadership Experience or are considered a beneficial opportunity for Girl Scouts.

Community Event Providers who have pre-scheduled event dates can also be found on the website calendar in addition to Rallyhood. Check it out!

## How do I sign up?

Activity listings are found at [www.gswise.org/cep](http://www.gswise.org/cep) and in **Rallyhood>Council-Wide Groups & Events Hub>Resources>Program>Community Event Providers**. Opportunities are updated throughout the year. Check back often to see what's new!

- Listings are organized by category.
- Registration and staffing are handled by the Community Event Provider. Contact the organization directly for questions or to register for an event.
- **Will travel** indicates the organization will come to your troop meeting location.

## Our Community Event Providers

### Approved Horseback Riding Stables

Camp Anokijig	Plymouth
Cedar Springs Therapeutic Ranch	Slinger
Dan Patch Stables	Lake Geneva
Equitate LLC	Ixonia
Flying S. Ranch	Grafton
Hoofbeat Ridge Camp	Mazomanie
Phantom Ranch Bible Camp	Mukwonago
Pine Ridge Riding Center	Slinger
Stepping Stones Farms	Franksville
Sun Fire Stables	East Troy
Wilderness Pursuit Horseback Adventures	Neillsville
YMCA Camp Minikani Equestrian Center	Hubertus

### Community Service

Aria of Brookfield	Brookfield
Eastside Senior Services	Milwaukee
Froedtert Health	West Bend
Kids Matter Inc.	Milwaukee
Lupus Foundation of America, Wisconsin Chapter	Milwaukee
Make-a-Wish	Varies
Ronald McDonald House	Varies
The Sharing Center	Kenosha

### Life Skills

FARE	Virtual
First Stage	Milwaukee
Fisk Avenue	Waukesha
Good Friends, Inc.	Will Travel
Humane Animal Welfare Society (HAWS)	Waukesha
Kappa Delta Sorority Theta Lambda Sorority	Milwaukee
La Terraza Pottery Studio	Milwaukee
Mosaic Creative Studio Location	Brookfield
National Alliance on Mental Illness (NAMI)	Varies
Racine County Public Health Division	Racine
Southeastern Hockey Association of WI (SHAW)	Milwaukee
Thrive Together	Delafield
Town Bank	Elm Grove
Wisconsin Humane Society	Milwaukee

### Museums, Tours, Attractions, & Shows

Festival City Symphony	Milwaukee
Fiserv Forum & Milwaukee Bucks	Milwaukee
Kenosha Public Museums	Kenosha
Marcus Performing Arts Center	Milwaukee

### Outdoors

Bear Paw Adventure Park	Caledonia
Boundless Adventures	Bristol
Cedar Springs Therapeutic Ranch	Slinger
Friends of Lapham Peak-Hausmann Nature Center	Delafield
Jellystone Park	Caledonia
Okauchee Fishing Club	Milwaukee
Pine Ridge Riding Center	Slinger
Schallock Center for Animals (HAWS)	Delafield
Schlitz Audobon Nature Center	Milwaukee
The Urban Ecology Center	Milwaukee
Treetop Explorer, LLC	Waukesha
Waukesha County Parks and Land Department	Waukesha
Wehr Nature Center	Franklin
Wildlife in Need Center	Oconomowoc

### STEM

Briggs & Stratton	Milwaukee
Daphne Draws Data	Varies
Dave and Busters	Wauwatosa
Harley-Davidson Museum	Milwaukee
Mad Science	New Berlin
Marquette University Society of Women Engineers	Milwaukee
Milwaukee School of Engineering	Milwaukee
UWM Planetarium	Milwaukee

GSWISE event financial assistance and Program Activity Credits are not available for Community Event Provider offerings.

# Community Event Providers: Pre-Scheduled Events

Some of our Community Event Providers offer pre-scheduled events. To learn more details about these events and register for pre-scheduled events, go to [gswise.org](http://gswise.org)>Discover>Event Calendar. More pre-scheduled events will be posted throughout the year, so check the website calendar often.

Event	Grade Level	Date/Time	Location
Horsemanship and Riding at Cedar Springs Therapeutic Ranch	D B J C	Sat., June 27, 10:00 a.m.-12:00 p.m.	Cedar Springs Therapeutic Ranch, Slinger
Horsemanship and Riding at Cedar Springs Therapeutic Ranch	D B J C	Sat., July 25, 10:00 a.m.-12:00 p.m.	Cedar Springs Therapeutic Ranch, Slinger
Horsemanship and Riding at Cedar Springs Therapeutic Ranch	D B J C	Sat., Aug. 22, 10:00 a.m.-12:00 p.m.	Cedar Springs Therapeutic Ranch, Slinger
Girl Scout Tree Climbing	J C S A	Sat., Sept., 26, 9:30-11:30 a.m.	Waukesha County Parks, Waukesha
Horsemanship and Riding at Cedar Springs Therapeutic Ranch	D B J C	Sat., Sept., 26, 10:00 a.m.-12:00 p.m.	Cedar Springs Therapeutic Ranch, Slinger



# Invest in Girl Scouts

## Join Daisy's Circle Monthly Giving Program

GSWISE's Daisy's Circle makes monthly giving convenient and helps MORE girls have access to Girl Scouting all year long.

Please visit [www.gswise.org/give](http://www.gswise.org/give) and join today!



*Daisy's Circle*  
Bring her promise to life

## Shop With Us!

Continue your year in style! Visit our Marion Chester Read Service & Resource Center or Woodhaven Service & Resource Center for a selection of resources for Girl Scouts of all ages.

### **Marion Chester Read Service & Resource Center**

131 S. 69th Street  
Milwaukee, WI 53214

### **Woodhaven Service & Resource Center**

2303 37th Street  
Kenosha, WI 53140



**girl scouts**  
of wisconsin  
southeast

131 South 69th Street  
Milwaukee, WI 53214

gswise.org • 800-565-4475

Girl Scouts of Wisconsin Southeast is funded by United Way agencies, public support, and product sales.



Connect with GSWISE



NON-PROFIT  
U.S. POSTAGE  
**PAID**  
MILWAUKEE, WI  
PERMIT NO. 3340

To the Girl Scout Family at:  
Address  
City, State Zipcode

# GIRL SCOUTS AND STEM

**Changing the World with Science,  
Technology, Engineering, and Math**

Leeward Business Advisors, a proud sponsor and partner, supporting Girl Scouts of Wisconsin Southeast's commitment to STEM programming.

[leewardba.com](http://leewardba.com)



**girl scouts**  
of wisconsin  
southeast

*Girl Scouting builds girls of courage, confidence, and character, who make the world a better place.*